



THE PILGRIM QUILL

JANUARY 2026

Journeying With Jeannie
Journeying With Jeannie

Dear Members and Friends,

Christmas Day has come and gone, and we now find ourselves standing at the threshold of a new year. I hope your Christmas was filled with moments of joy, rest, and connection. As the calendar turns, many of us begin to look ahead and wonder what this new year might hold—for our lives, for our loved ones, and for our church. Are you making plans for the year ahead? Are you thinking about changes, hopes, or new beginnings?

As each new year approaches, I find myself reflecting on the year that has passed—on moments I would cherish again and moments I might wish I had handled differently. Yet faith reminds us of something important: while we mark January 1st as a new beginning, God's gift of renewal does not wait for the calendar. Each day, God invites us to lay down the pain we have carried—whether caused or endured—and to rise with fresh hope, grace, and possibility.

As we begin this new year together, I am reminded of a hymn from our hymnal, *"This Is a Day of New Beginnings."* Each time we sing it, I am struck by how gently and honestly it speaks to the human heart—calling us to remember, to release, and to trust that God is still at work, making all things new. The words are important to reflect on:

This is a day of new beginnings,
time to remember and move on,
time to believe what love is bringing,
laying to rest the pain that's gone.

For by the life and death of Jesus,
God's mighty Spirit, now as then,
can make for us a world of difference,
as faith and hope are born again.

Then let us, with the Spirit's daring,

step from the past and leave behind
our disappointment, guilt, and grieving,
seeking new paths, and sure to find.

Christ is alive and goes before us
to show and share what love can do.
This is a day of new beginnings
our God is making all things new.

This hymn reminds us that through the life, death, and resurrection of Jesus, faith and hope are continually being born again, even in us.

With that spirit in mind, I invite you to consider a New Year's resolution that nurtures your spiritual life. Perhaps you might attend a Bible study, commit to reading Scripture more regularly, or hold a particular person, family, or situation in prayer throughout the year. Whatever you choose, let it be something that draws you closer to God and deepens your faith.

And if you stumble or forget along the way—as we all do—remember this: God is not limited to one day on the calendar. Each morning is a new beginning. God's grace meets us again and again, offering renewal, forgiveness, and fresh starts.

May this new year be filled with hope, courage, and the assurance that God is already walking ahead of us.

Blessings to you all,
Grace and peace,

Jeannie

ADULT EDUCATION OPPORTUNITIES

Welcome back Sunday & Monday participants!

ADULT FORUM

Sunday Mornings 10:15AM to 11:15AM in the lounge following the 9:00AM worship.

To join the zoom link:

<https://us02web.zoom.us/j/87682457999?pwd=NklCT0ZEYWtTRnlwcEtrNDBCMGRhQT09>

JANUARY 4 – COFFEE FELLOWSHIP

January 11

Anxiety, Mental Wellness and Self-Care

Leader: Sue Mitchell-Metz

National Alliance for Mental Illness

Sue will help us begin our year with information on these important topics and tools for helping to stay mentally and emotionally healthy.

January 18

History of Pilgrim Trust Fund

Leaders: Linda Stutz - Bobbie Flaherty

Linda and Bobbie will inform and/or update us on the purpose and use of this important fund.

January 25

Pilgrim ONA 2026-A New Covenant

Leader: Rev. Chris Deaner-Rogers-Sue Kaiser

Rev. Chris will discuss the meaning and language of our new covenant



.....

EXPANDING HORIZONS

Monday Afternoons 1:00PM-2:30PM in the lounge. To join from home via Zoom the link is:

<https://us02web.zoom.us/j/87682457999?pwd=NklCT0ZEYWtTRnlwcEtrNDBCMGRhQT09>

January 5

Shattering the Illusion of Race: A Personal and Professional Journey

Leader: Dr. Kimberly Barrett – Author

Writer, Consultant, Retired Award-Winning Academic
Dr. Barrett will discuss the purpose and process of writing her book, Rethinking Race: A Memoir.

January 12

FREE Prison Ministry

Leader: Juliann Bliefrick

FREE Operations Coordinator

Discover how the organization provides resources, personal development, spiritual growth and evangelism to those within the penal system.

January 19

FDL Community Response Team

Leaders: Officer Brooke Mathes, Mental Health and Wellness Specialist City of FDL PD, Sheila Seaborg, MAC, FDL County Dept. of Human Services, Wellness Specialists City of FDL PD Kim Miller MSW, LCSW, FDL County Dept of Human Services, Reverend Grant Baumgart, Lead Chaplain

Meet the incredible team and discover the wide range of crisis intervention services in the county.

January 26

Artificial Intelligence

Leaders: FDL County Sheriffs Dept.

Officers will inform and advise us of the challenges and dangers of A.I. and how we can stay alert and safe.





Thank You

On behalf of Brooklyn Heitger and her family Aretta and Brandon Petrie, I would like to say thank you to all who gave money for the purchase of Kwik Trip gas cards for the family to use as they make numerous trips to Children’s Hospital for Brooklyn’s medical needs.

Linda Stutz and myself met with Brooklyn and Aretta recently following one of their many trips down to the hospital to visit and give her your most generous gift. They were so very grateful for your support and asked that I pass their appreciation on to all of you.

Brooklyn is awaiting the news that her need for both a liver and kidney transplant has been approved.

Pilgrim is such a caring and giving community and I am proud to say we collected \$935 in Kwik Trip cards that this family will put to good use.

THANK YOU Pilgrim Family for once again stepping up when the need arose.

Karen Goodacre

On behalf of Brooklyn and her family

.....

Thank You from the Outreach Ministry

Members of the Outreach Ministry begin the new year with grateful hearts for the generosity of Pilgrim Church. Each month we bring a need from the community to your attention, and each month the request is met. Many lives are touched by your unselfish gifts. We appreciate also your continued support of KIVA and the Alternative Gift Fair. Our December fair raised \$4300 for nine nonprofit organizations, \$4500 in Scrip sales and \$375 for the Just Fare store.

Thank you,
Peg Bradley, Jill Barbeau, Jean Wright, Barb Spies,
Mary Hobbs and Karen Goodacre



Christian Outreach

For the month of January, Outreach will be collecting for Rosenow School.

There is always a need at the school for winter gear, dues to resources and losses of winter gear. The following is the list of items Rosenow could use to help the children through the winter.

- Boots Size 13 youth - 4 youth
- Waterproof gloves or mittens
- Fleece scarfs–gender neutral
- Coats or jackets S-XL for boys and girls
- Snacks –no nuts/ Such as Fishy crackers or animal crackers...the small individual bags for the students who don’t always get breakfast at home.

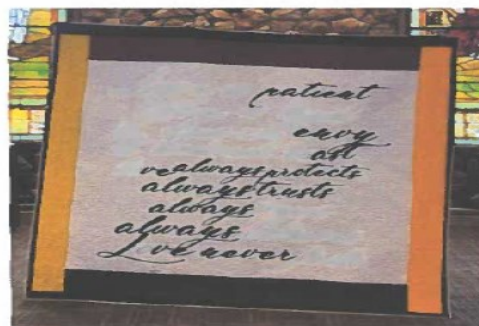
You can put your donations on the shelf that is between the doors at the entrance.

Thank you for your help.

Christian Outreach Committee

.....

Win this Quilt Raffle



Quilt was handmade and donated by Deb Wamser and proceeds will go towards Youth Programming at **Pilgrim United Church of Christ**.

The drawing for the quilt will be Sunday, February 22, 2026, at 10:00 AM after the church service at Pilgrim UCC.

Ticket can be purchased at the church office, 535 Stow St., Fond du Lac from 9:00 AM to 1:00 PM Monday thru Friday or Sundays January 18th to February 22nd before & after the church service from 8:45 – 10:15 AM.

Ticket Cost is:

1 ticket for \$5.00

3 tickets for \$10.00

7 tickets for \$20.00

Pilgrim UCC, 535 Stow St., Fond du Lac, WI 54935

Prairie Memorial Garden Annual Report

The Prairie Memorial Garden (PMG) committee has been meeting monthly for the past year. The Memorial Garden committee members have been visiting other churches in the area that have Memorial gardens to see what aspects we would like for our garden. We realize that there are many aspects to a memorial garden beyond flower beds and prairie gardens. There are often benches, signs, nameplates, and in some cases water fountains, gazebos and arches at the entrance. All the gardens have some walking path of either crushed gravel, bricks or concrete sidewalks for accessibility.

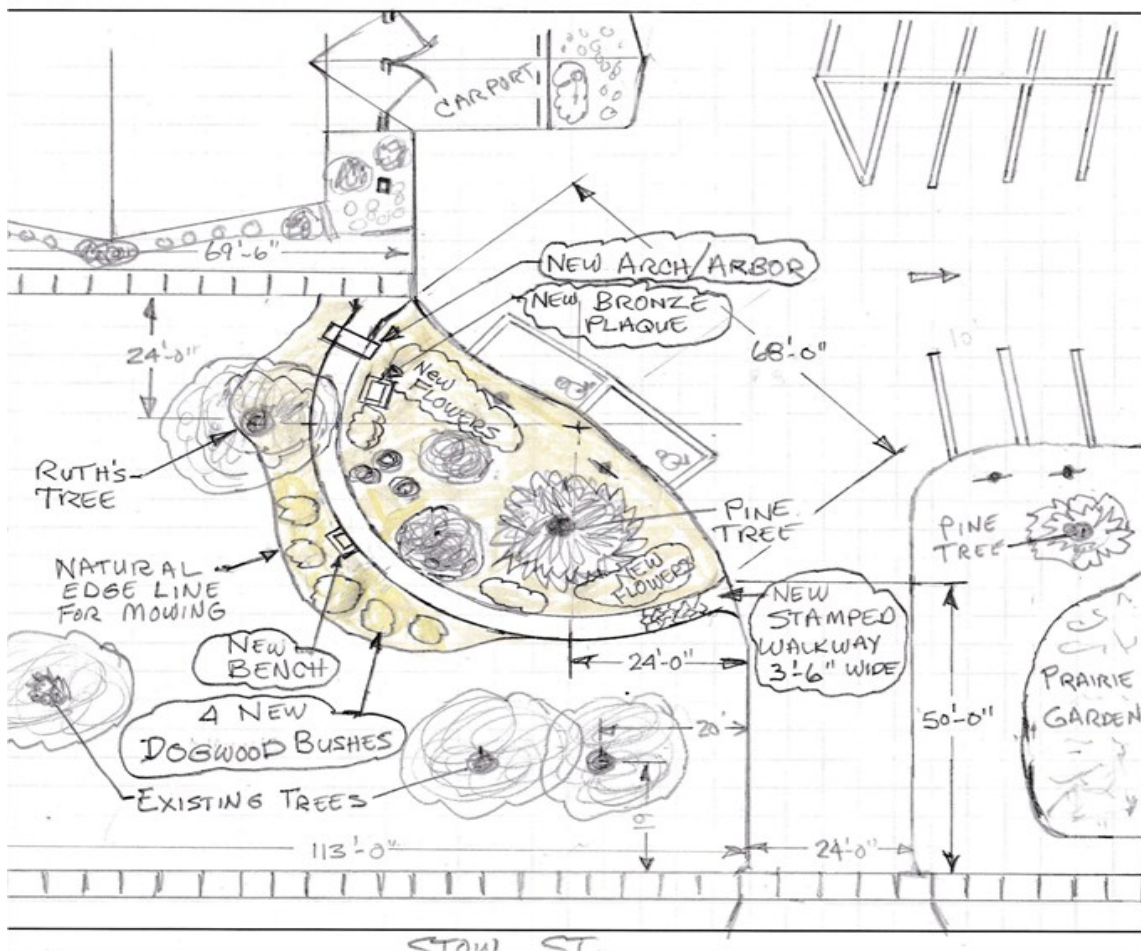
We have decided that we would like to have an outside bronze name plate plaque versus an inside plaque which would not be as accessible as an outside plaque. We received a quote from a local memorial company for the bronze plaque and name plates.

We have agreed to use the prairie garden for the spreading of ashes which has been okayed with both the Green Team and the Memorial Garden committee. We would like to tie together the tree that is planted in Ruth Sandidge's memory along with her ashes and the prairie garden. Below is a sketch of a walking path that would start by Ruth's tree and lead over to the driveway in the direction of the prairie garden. The existing bushes and trees in this area would be enhanced with native flowers and native bushes.

A set of policies and an application to use the PMG has been drafted and will be reviewed by the church council at the January 2026 council meeting.

Anyone wishing to donate towards the Memorial Garden development or future maintenance can donate to the general Memorial Fund. So far \$17,695 has been donated from the Lois Ring and Chuck Zwerg memorial donations. We look forward to proceeding with the Memorial Garden in the spring of 2026.

The current members of the PMG committee are Tracy Abler, Bud & Carol Browning, Karen Goodacre, Ron McCreehy, Gary Ring (chairperson), Neal & Ellen Sieglaff, Pete Vercooterren, Lynne Zwerg and Pastor Jeannie.



Pilgrim's Prairie Garden: Year One Reflections

Our prairie garden has just completed its first year—a quiet but vital season of rooting and resilience. Prairie plants grow slowly above ground in their first year, focusing energy on establishing deep root systems that will support them for decades to come.

To support this process, the area was mowed three times to prevent weeds from growing too tall or going to seed. Annual weeds, when kept in check during the first year, rarely pose a long-term threat to prairie health.

Protecting the Prairie from Pet Waste

In response to concerns about dogs being allowed to defecate in the garden, a sign was installed reading: “Protect our prairie. Keep Dogs Out.”

While it's a common misconception that dog waste acts as fertilizer, it can actually harm natural ecosystems. Dogs' protein-rich diets result in waste with high levels of nitrogen and phosphorus—nutrients that favor fast-growing, invasive plants. These aggressive species can outcompete the slower-growing native plants we're working so hard to establish.

.....



Intergenerational Fellowship Nights

The Chili Dinner and Game Night is back! Join us on Friday, January 16, from 6:00–7:00 p.m. for an evening of delicious food, fun games, and fellowship with our church family. A variety of games will be available throughout the night, and winners will receive prizes! We would love for you to bring your friends and family with you. Sign up is in the Narthex.

Youth Group

All 6th–12th graders are invited to Youth Group on Friday, January 16th, from 4:30–5:45 p.m. Come enjoy games, dinner, and desserts! Please let Michael know if you plan to attend. Remember, friends are always welcome!

Confirmation Class

We are seeking snack and beverage donations to serve during Confirmation Class. Items such as juice, gatorade, lemonade, chips, snack cakes, and crackers are all appreciated.

If you'd like to contribute, please sign up in the narthex next to the date you'd like to provide food or drinks.

Sunday School

Sunday School will return from our winter break on Sunday, January 11th. We look forward to welcoming everyone back!

Book Drive

Thank you to everyone who donated books to our collection! These books are available for children to read during church services. Each month, books will be rotated to highlight and celebrate the values of our church.



WISE (Welcoming, Inclusive, Supportive, Engaged)

Five Simple Daily Practices to Ease Winter Blues

While you can't control the weather, you can control how you respond to it. The following five mindful habits will help you achieve emotional balance, even on the coldest days.

1. Start your day with mindful meditation

Studies show that mindfulness improves mood regulation and reduces anxiety. Doing a morning meditation sets the tone for your day and can offer a sense of calm and clarity. You don't have to spend an exorbitant amount of time meditating to see the benefits, either. Even brief mindful breathing sessions can reduce stress, according to some research.

2. Prioritize movement and fresh air

Even if it's chilly out, moving your body and getting fresh air can make a noticeable difference in how you feel. Exercise releases endorphins, which are natural mood boosters. Short walks can improve your overall well-being and reduce depressive symptoms. If it's just too cold to get outside, try yoga or stretching for an indoor workout that helps break unhelpful emotional patterns.

3. Practice mindful self-care

Winter is a reminder that a slower pace is important. Embrace this by focusing on self-care throughout the season. Make time to take a warm bath, read by candlelight, journal your feelings, or use other self-care practices that help restore emotional well-being. These moments of rest and reflection can be powerful tools for coping with depression and regaining balance.

4. Connect with supportive people

Human connection is crucial if you struggle with isolation during the winter months. Studies suggest that social support is an effective way to fight depression. Whether you send a text, pick up the phone, or share a meal with a loved one, make the effort to connect with people you care about. It can do more than lift your mood when you have the winter blues. It also reminds you that you're not alone, and support systems can complement therapy for depression. Combine connection with mindfulness. Ask a friend or family member to join you for a guided meditation or deep-breathing exercise. Sharing mindful moments can

foster a deeper connection and sense of compassion.

5. Create a gratitude or positivity ritual

The power of positivity and gratitude is proven to reduce depressive symptoms and anxiety by enhancing emotional resilience and well-being. By taking the time to appreciate the positive things happening in the world, you can actually shift what your brain focuses on. It's easy to do, too. Start and end each day by listing three things you're grateful for.

Maintaining emotional wellness through the winter

If you feel low or tired in winter, you're not alone. But you don't have to let it take over your season. It's possible to manage the winter blues by practicing mindfulness, engaging in self-care, and adopting other healthy habits that center you and lift your mood. Mindfulness is a lifelong skill that helps you through the darkest days. With Headspace, you'll find mindful practices, guided meditations, daily exercises, and support to build lasting emotional well-being. Prioritizing mental wellness does more than just beat back the winter blues. It helps you find calm and peace in every aspect of your life.



Green Team

Recycling Updates from the Green Team

Amber Pill Bottles

Thank you to all for paying attention to the directions for recycling amber pill bottles by removing the labels, washing the bottles in soapy water to remove any sticky residue, and recapping the dry bottle. If you have bottles with a sticky adhesive that you can't get off, please discard them.

Recycle Your Christmas String Lights with the Green Team!

Once again this year, the Green Team is making it easy to recycle your unwanted holiday string lights. Recycling string lights helps protect the environment in several important ways. These electronic items don't break down in soil and can release harmful chemicals. However, many of their components—like glass, plastic, and copper—can be reclaimed and reused, reducing waste and conserving resources. Please remember: do not place string lights in curbside recycling bins. Their wires can tangle in machinery and cause costly shutdowns at recycling facilities. To help, the Green Team has placed a collection box in the narthex. All donated lights will be properly shredded and separated into reusable materials. Before dropping off your lights, remove any large, old-fashioned bulbs and place those in the trash.

Thank you for helping us care for creation.



WISE Designated Mental Wellness Month

January is a transitional month – from the glitter and merriment of Christmas to the cold shorter day light days of January, and carb comas to healthy diet reality. At Pilgrim, January is our designated Mental Wellness Month and the WISE Committee is here for you with uplifting messages of nonjudgement, hope and support!

This January, meditate on the word Tranquil: “Free from agitation of mind or spirit. Free from disturbance or turmoil.” On the 7th day, God created tranquility, peace and renewal.

Check out the Bulletin Board for more information about Mental

Wellness, come to fellowship time on January 4th and the Adult Forum on January 18th, listen to messages in Sunday morning children’s time, and know that you are not alone.

Blood Pressure Opportunities

Throughout the year, health professionals will be available after worship services on the first Sunday of each month to take blood pressures. Sue Schmitz will be available on Sunday, December 4th – Happy (Healthy You) New Year!

A Step toward Awareness

Dry January is a voluntary challenge to abstain from drinking alcohol for a month. It’s about liver health, promoting overall well-being, mental clarity, and healthier lifestyle choices. And it’s about awareness of personal health habits. Alcohol is a depressant, and it may seem like a good thing to help cope with the negative drama in the news, but there are definite drawbacks to routine use. What is your relationship with alcohol? If just the idea of not drinking for a month makes you feel anxious, then maybe it is time to seriously challenge yourself to do just that!

January is Glaucoma Awareness Month

Glaucoma is an eye condition that damages the optic nerve and can lead to vision loss or blindness. (The optic nerve sends visual information from your eye to the brain and is vital for good vision.) Damage to the optic nerve is often related to high pressure in the

eye, but glaucoma can happen even with normal eye pressure. Many forms of glaucoma have no early warning signs as the vision changes are so gradual that they may not be noticeable until later stages - when vision is permanently affected. The only way to check for glaucoma is through a comprehensive dilated eye exam.

Glaucoma is a leading cause of vision loss and blindness in the US, and there’s no cure. Starting treatment as early as possible can help stop vision loss. People who are at higher risk for developing glaucoma include those over 60, those with a family history of glaucoma, people with diabetes and those of African, Asian, or Hispanic descent. For more information, the Glaucoma Research Foundation provides resources, including a free booklet, “Understanding and Living with Glaucoma.” If you haven’t already, a good New Year’s Resolution is to schedule an eye exam - and resolve to do this yearly.

.....

Loaves and Fishes 2025 Summary

For approximately 50 years, Pilgrim UCC has participated in Fond du Lac’s Loaves and Fishes Program. This wonderful program provides 2 meals per week for people in need in our city. This is a most helpful effort that allows us to be representatives of our faith in our community. When you work one of these meals, you can truly sense that this is just where Jesus wants you to be.

This year we worked at 4 meals. We served over 660 meals. We often had food left over and were able to donate it to local food support causes and groups. Nothing goes to waste. Approximately 50 of you donated, prepared, or served food. Thank you so much for your faithful support. In 2025, we have been assigned the following dates: February 4, April 1, July 1, and September 9. We hope that those of you who helped this year will be able to help again. We are always looking for new helpers. If you have questions, please contact us.

Karen Goodacre & Jim Bentley



Hello Pilgrim family & friends! Welcome to 2026! We lift up in gratitude, Tracy Abler and the Congregation of Sisters of St Agnes (CSA), for providing the December meal for Open Circle Unitarian's Church Café Q's (LGBTQ+ youth) monthly gathering. CSA really had to do meal prep!! When asked what they wanted for their December gathering the youth responded: "We would like "KFC" style, since we no longer have a KFC in town! Fried chicken, mashed potatoes and gravy, potato logs, biscuits." And then Tracy and her 'crew' added baked but undecorated Christmas cut out cookies with ALL the fixings! No questions asked – just giving! And we give thanks for that too!!

We are ready for Café Q meal volunteers for 2026! Please review our link to the Sign Up Genesis calendar for 2026 meals and sign up for the month that works for you! <https://www.signupgenius.com/go/4090F4CA4AF2AA4F58-60367587-2026/182850317#/>

Please see Sue Kaiser with any questions: suekai@aol.com/920.946.5563

Friends, as we move forward into the New Year – we look to deepen our understanding of what it means to truly BE Open and Affirming! We invite you to attend our Open and Affirming education session on January 25, 2026 following our worship service. As we contemplate the final content for this education session there are several topics of discussion we are considering:

- ☑ Understanding our ONA Covenant: Discussions on **why a public ONA statement is important** to explicitly welcome LGBTQ+ individuals and their families, reducing the possibility of misunderstanding who is included in the "welcome".

- ☑ Intersectionality of Justice: Exploring the current challenges faced by LGBTQ+ individuals, particularly those at the intersections of racism, poverty, and gender-based violence, and how the church is called to **respond with faithful public action**.

- ☑ Shifting Power and Shared Leadership: Making intentional space for BIPOC and LGBTQ+ people to **lead**

within the church community, ensuring the voices of those most affected by injustice are centered.

- ☑ Community Building and Outreach: Strategies for ONA churches to **become a visible and reliable presence** in the local LGBTQ+ community, especially regarding issues like protecting youth from bullying or advocating for equal protection under the law.

- ☑ "Our Whole Lives" (OWL) Programs: Some churches use the UCC's **comprehensive lifespan sexuality education program**, which incorporates religious values and up-to-date information on gender and sexuality, as a basis for discussion and education.

We look forward to sharing the end of 2025 with you and learning and growing WITH you on January 25, 2026 as we continue our ONA learning journey.

Wishing you well in 2026. Your Pilgrim ONA Team!

.....



With the new program year beginning and everyone getting back into their routines, please consider making a stop at the SCRIP table on Sunday mornings and get back into the habit of using the SCRIP program.

Every Sunday morning there is the opportunity to help the Pilgrim budget by purchasing SCRIP cards. With the new fall schedule in place, SCRIP will be available for purchase before and after the 9:00 am service until 10:15 a.m. If you haven't given SCRIP a try yet, it is a very friendly user program and can meet just about all your purchasing needs.

So from food to gas, home repairs to birthday gift cards, let the SCRIP table in the narthex be one of your Sunday morning stops!!

Thanks for your support. If you have any questions, please don't hesitate to ask Karen Goodacre .
920-904-5740



Kirk Dille	Jan 5
Carol Browning	Jan 6
Jane Flaherty	Jan 6
Pat Towne	Jan 7
Randy Stutz	Jan 8
Susan Peterson	Jan 8
Robert Oenes	Jan 10
Ron Spies	Jan 10
Alex Curl	Jan 13
Susan Kirchhoff	Jan 14
Judy Reinke	Jan 15
Brian Christenson	Jan 17
Hailee Olson	Jan 18
Stephen Ross Speidel	Jan 22
Shannon LaLuzerne	Jan 22
Bud Browning	Jan 24
Abigail Blanc	Jan 24
Joseph Keys	Jan 27
Jeanne Ihlenfeldt	Jan 27
Jerilyn Oenes	Jan 28
Sue Schmitz	Jan 29
David Overbo	Jan 30



Dianne & Jim Bentley	Jan 17
----------------------	--------

Ushers for January	
Date	9:00 Service
Jan 4	Randy & Linda Stutz
Jan 11	Barb & Avery Geiger
Jan 18	Deb & Jim Wamser
Jan 25	Bart & Dawn Dahlke

Welcomers for January	
Date	9:00 Service
Jan 4	Randy Stutz
Jan 11	Fran Schmid
Jan 18	Gary Ring
Jan 25	Wendy Ellison

Worship Leaders January	
Date	9:00 Service
Jan 4	Linda Stutz
Jan 11	Noreen Henderson
Jan 18	Jill Barbeau
Jan 25	Sue Kaiser

Pilgrim United Church of Christ
Church Council Meeting
November 17, 2025

Present: Pastor Jeannie Douglas, Linda Stutz, Peg Bradley, Donna Jost, Ron McCreedy, Patty Minter, Avery Geiger, Dixie Sullivan, Jim Bentley, Steven Wicichowski, Mary Berens

The meeting opened with the acknowledgement of a quorum by Jim and prayer by Pastor Jeannie at 6 PM.

Secretary's Report: Ron made a motion to accept the report, Linda seconded the motion. Motion passed.

Treasure's Report: Report attached. The report was accepted by unanimous consent. Linda made a motion to fund a retreat for our confirmands with \$1,580 from the Trust Fund Allocation. Avery seconded the motion. Motion passed. Donna shared that she and Kevin Berens have completed the financial audit through the first ¾ of this year. A special council meeting to address the 2026 budget will be December 8, at 6 PM.

Pastor's Report: Report attached.

Vice President's Report: None

President's Report: None

Old Business:

Church Copier: It was clarified that we do own the copier and that we have a maintenance agreement on it. A better record of this will be established.

Private Accounting Firm for Payroll: Donna provided an update on her thoughts about our contracting with an accounting firm to do our payroll. At this time Donna recommends that we do not pursue this option due to the costs involved.

Donna will be pursuing a subscription to Church Treasurer/tax information for continued updates on the changing rules.

New Business:

Council was reminded that the Annual Reports from each ministry are due to Amy by December 7, 2025.

Ministry/Committee Reports and Updates

Worship & Music - Steven Wicichowski

-Blue Christmas service will be Thursday, December 18th at 7 PM.

-Poinsettias (26 red) will be ordered from Pick 'n Save for \$8 each. An order form will be in the bulletin and in the December Quill.

-At this time a post-Christmas Eve service fellowship time is not being planned.

Christian Education - Dixie Sullivan

-A Quilt Raffle will be held to raise money for youth programming. Tickets are 1 for \$5, 3 for \$10 and 7 for \$20. Ticket sales will begin January 18th.

-The proposed Christian Education, Child and Youth Ministries proposed 2026 budget is \$3,100.

-A proposed Narthex Little Library was discussed. The library would/could include books of interest to our children and youth with perhaps monthly topical themes highlighting Black History Month, Indigenous Peoples Month, Down Syndrome Awareness Month, etc.

-The Adult Education Committee is exploring topics and presenters as they plan for the future.

Property and Maintenance - Avery Geiger

-Fire and Rescue Inspection found the kitchen class K fire extinguisher overdue for inspection.

It will be replaced with a class ABC extinguisher.

-Flies in the sanctuary are now under control.

-New surface mount LED lights will not work with our existing cans in the lounge. As bulbs burn out in the halls and lounge, they will be replaced with 5k 15 W LEDs.

Lay Life and Leadership - Patty Minter

-The Dinners Club will next occur in January, 2026. It may not be offered every month.

Stewardship and Finance - Ron McCreedy

-Review of Monthly Financial Statement for October, 2025:

-Average monthly income needed to meet budgeted expenses = \$18,029

-October Sunday Offering = \$11,794

-Additional income-includes Fall Fest, Scrip, Rummage Sale= \$10,950

-Total October Income = \$22,744

-YTD Budget = \$180,292

-Total Inc. YTD = \$176,590

-Difference by Month = \$3,702

-Monthly Income October Pledges were behind only \$1,835.

-Pledges and Other Income was behind \$3,702.

-Overall budget is on track with spending and income.

-Rummage Sale Income was \$5,649, with both sales totaling \$11,785. Budgeted \$7,000.

-Neighbors in Need Income to date is \$855.

-Warming Shelter Income to date is \$1,225.

Membership and Evangelism - Mary Berens for Fran

-There were no membership changes this month. A final membership count will be done in December.

-Letters have been sent out to nonattenders.

-Fran has reviewed numerous options for purchasing tablecloths for our 8" tables used in the Fellowship Hall. Fran will ask for opinions from the Green Team.

Christian Outreach - Peg Bradley

-Adopt-a-Family for Christmas. One family will receive gifts specifically for them from Outreach and the congregation.

-Alternative Gift Fair is organized and will be held on December 7th.

-Next meeting is Tuesday, December 9th at 10 AM.

Committee Reports

Nominating Committee

-Additional people are needed for several committees. The Nomination Committee will meet soon to attempt to address these needs. It was suggested that Barbara Roder might be able to help reach out to people.

Ham Dinner & Bazaar

-668 meals were served this year. Profits came to \$16,459 as of this meeting. The final tally will be published in the annual report.

Memorial Fund Committee

Green Team

- The Green Team will provide food for the Fellowship time on March 1, 2026.
- Amber pill bottle collection is completed for October. The bottles will be shipped to the party that handles the distribution.
- The Prairie Garden has received 3 mowings this summer. There is no need to mow again.

SCRIP

- Everyone is reminded to place Christmas SCRIP orders early.

Trust Fund Report - Pastor Jeannie

-Linda made a motion to approve the following recommended distribution from the fund. Motion seconded by Donna. Motion passed.

-Distribution as follows:

- Inter Faith Power and Light \$500
- Fond du Lac Food Pantry \$1500
- Feeding America NE \$1500
- St. Vincent DePaul Society \$1500
- Rosenow School Student Services \$500
- Fond du Lac High School Student Services \$1000
- NAMI \$500
- UCC Emergency Funds \$1000
- PUCC Pastor's Discretionary Funds \$658.46
- Roots & Wings UCC Church Camps \$1000
- TOTAL \$9,658.46

WISE Task Force

- The WISE Committee is finalizing January's Mental Wellness Month activities: coffee time, Narthex display, speakers at an Adult Forum and Expanding Horizons, and Children's Time message each Sunday.
- We are partnering with Christian Education to host an intergenerational movie night in April.

Open and Affirming

- The new suggested ONA Covenant statement was again reviewed.
- The suggested letter to our members from the Church Council was reviewed.

Prairie Memorial Garden

- Gary Ring will now be chairing this committee.
- Council was provided with the most recent plans, costs, diagrams, forms, and policy statements.
- Gary will be invited to our January, 2026 council meeting to answer questions.

Constitution/ByLaws Committee

-Jim shared the most recent workings of the committee. Changes have been proposed to the Constitution with perhaps more to follow. We will discuss further changes at our December council meeting.

The meeting closed at 8:25 PM.

Respectfully Submitted,
 Jim Bentley
 Council President

JANUARY 2026

Sun	Mon	Tue	Wed	Thu	Fri	Sat
4 9:00 AM Worship BP Checks after Service No Sunday School	5 1 PM Expanding Horizons	6 5:30 PM Pastor- Relations	7 5 PM Confirmation Class	8 7 PM Choir Practice	9	10 Gary Greenfield Funeral Time TBD
11 9:00 AM Worship/Bell Quart. 10:15 AM Adult Forum	12 10 AM COP 1 PM Expanding Horizons	13 10 AM Christian Outreach 11 AM Membership & Evangelism Meeting 5 PM P & M	14 4 PM Memorial Garden Meeting 4:30 Worship Meeting	15 7 PM Choir Practice	16 4:30 PM Youth Group 6 PM Intergenerational Fellowship Chili Dinner & Game Night	17
18 9:00 AM Worship/Choir 10:15 AM Adult Forum	19 1 PM Expanding Horizons 6 PM Council Meeting **Quill Deadline**	20	21 5 PM Confirmation Class	22 7 PM Choir Practice	23	24
25 9:00 AM Worship 10:15 AM Adult Forum	26 1 PM Expanding Horizons 4 PM Green Team	27	28	29 7 PM Choir Practice	30	31
<u>Feb 1st Reminder</u> <u>Congregational Meeting</u> <u>after Worship</u>						

Pilgrim United Church of Christ
 535 Stow Street
 Fond du Lac, WI 54935-2865
 Phone: 920-921-0415
 Email: pilgrim.info@pilgrimuccfdl.org
 Website: www.pilgrimuccfdl.org

NON-PROFIT ORG. U.S. POSTAGE PAID Fond du Lac, WI Permit No. 182
--

RETURN SERVICE REQUESTED

The Pilgrim Quill

Pilgrim United Church of Christ Mission Statement

Pilgrim United Church of Christ, a theologically progressive Christian church, pursues growth in faith, social justice, and respect for all voices-with Jesus as our model for how to live and love.

Those Who Serve

Pastor	Rev. Jeannie Douglas
Administrative Assistant.....	Amy Rector
Parish Nurse	Sue Schmitz
Child & Youth Coordinator	Michael Friedel
Adult Education Coordinator.....	Mary Ann Otto
Worship Musician.....	Chris Deaner-Rogers
Choir Director	Zachary Ball
Choir Accompanist	Chris Deaner-Rogers
Custodian.....	Green & Clean
Church Council President	Jim Bentley
Church Council Vice President	Linda Stutz
Church Council Secretary	Wendy Ellison
Church Treasurer.....	Donna Jost

Rides to church are available by contacting Randy Stutz 920-539-6277

We are happy to send you our newsletter, but if you no longer wish to receive it, please contact us and we will remove you from our mailing list.